

EG91&EG95

Windows USB Driver

Installation Guide

LTE Module Series

Rev. EG91&EG95_Windows_USB_Driver_Installation_Guide_V1.0

Date: 2017-04-18



Our aim is to provide customers with timely and comprehensive service. For any assistance, please contact our company headquarters:

Quectel Wireless Solutions Co., Ltd.

Office 501, Building 13, No.99, Tianzhou Road, Shanghai, China, 200233

Tel: +86 21 5108 6236

Email: info@quectel.com

Or our local office. For more information, please visit:

<http://www.quectel.com/support/salesupport.aspx>

For technical support, or to report documentation errors, please visit:

<http://www.quectel.com/support/techsupport.aspx>

Or email to: Support@quectel.com

GENERAL NOTES

QUECTEL OFFERS THE INFORMATION AS A SERVICE TO ITS CUSTOMERS. THE INFORMATION PROVIDED IS BASED UPON CUSTOMERS' REQUIREMENTS. QUECTEL MAKES EVERY EFFORT TO ENSURE THE QUALITY OF THE INFORMATION IT MAKES AVAILABLE. QUECTEL DOES NOT MAKE ANY WARRANTY AS TO THE INFORMATION CONTAINED HEREIN, AND DOES NOT ACCEPT ANY LIABILITY FOR ANY INJURY, LOSS OR DAMAGE OF ANY KIND INCURRED BY USE OF OR RELIANCE UPON THE INFORMATION. ALL INFORMATION SUPPLIED HEREIN IS SUBJECT TO CHANGE WITHOUT PRIOR NOTICE.

COPYRIGHT

THE INFORMATION CONTAINED HERE IS PROPRIETARY TECHNICAL INFORMATION OF QUECTEL CO., LTD. TRANSMITTING, REPRODUCTION, DISSEMINATION AND EDITING OF THIS DOCUMENT AS WELL AS UTILIZATION OF THE CONTENT ARE FORBIDDEN WITHOUT PERMISSION. OFFENDERS WILL BE HELD LIABLE FOR PAYMENT OF DAMAGES. ALL RIGHTS ARE RESERVED IN THE EVENT OF A PATENT GRANT OR REGISTRATION OF A UTILITY MODEL OR DESIGN.

Copyright © Quectel Wireless Solutions Co., Ltd. 2017. All rights reserved.

About the Document

History

Revision	Date	Author	Description
1.0	2017-04-18	Hunter LV	Initial

Contents

About the Document	2
Contents	3
Figure Index	4
1 Introduction	5
2 Install Driver	6
2.1. Installation	7
2.2. Test	11
3 Uninstall Driver.....	12
3.1. Uninstallation	12

Quectel
Confidential

Figure Index

FIGURE 1: DRIVER NOT INSTALLED ON THE SYSTEM	6
FIGURE 2: CONFIRM INSTALLATION	7
FIGURE 3: CHOOSE DESTINATION LOCATION	8
FIGURE 4: START COPYING FILES	8
FIGURE 5: WAIT WHILE INSTALLING DRIVER	9
FIGURE 6: FINISH INSTALLATION OF DRIVER	9
FIGURE 7: CHECK INSTALLATION RESULT FOR DRIVER	10
FIGURE 8: PORT TESTING BY QNAVIGATOR	11
FIGURE 9: CHOOSE DRIVER AND UNINSTALL	12
FIGURE 10: CHECK UNINSTALLATION SETTING	13
FIGURE 11: CONFIRM UNINSTALLATION	13
FIGURE 12: WAIT WHILE UNINSTALLING DRIVER	14
FIGURE 13: REMOVING FILES	14
FIGURE 14: FINISH UNINSTALLATION OF DRIVER	15
FIGURE 15: CHECK UNINSTALLATION RESULT FOR DRIVER	16

1 Introduction

This document illustrates how to install EG91&EG95 USB driver on Windows systems via installation package. This installation package supports Windows XP, Windows Vista, Windows 7, Windows 8 and Windows 10 systems. This document introduces the procedure on Windows 7 system as an example.

Quectel
Confidential

2 Install Driver

This chapter mainly describes how to install EG91&EG95 USB driver by installation package.

Connect EG91 or EG95 module to PC by USB cable and press EG91/EG95's Power Key to start the module. If customers have not installed any Quectel drivers on the system before, there would be a prompt about new device which indicates customers to update the driver. Please ignore the prompt and go to the next step.

The figure below shows that the driver has not been installed on the system.

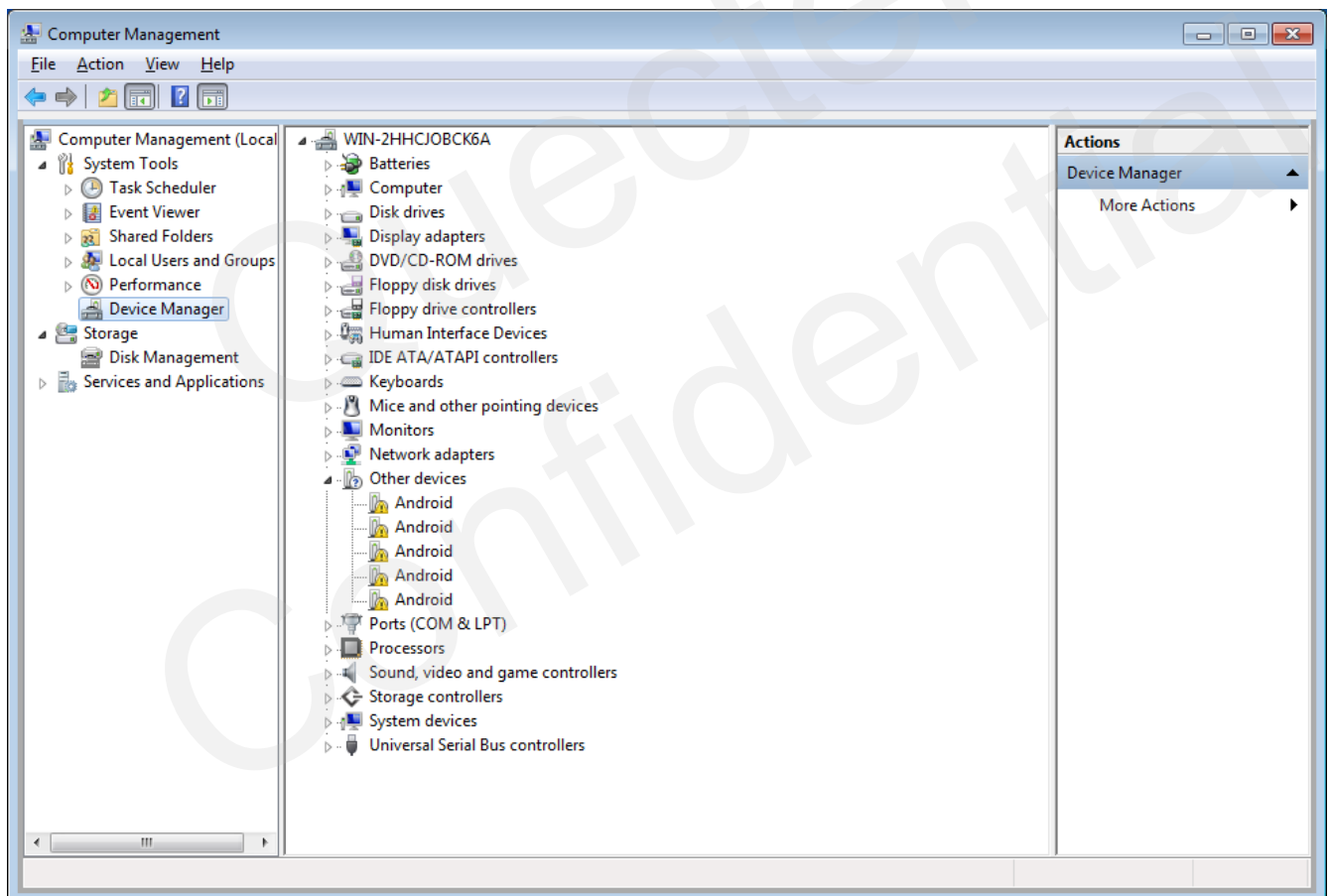


Figure 1: Driver Not Installed on the System

NOTE

For Windows XP system, EG91/EG95 module must be connected to PC before installing the driver.

2.1. Installation

Please get the latest installation package from disk supplied by Quectel or from Quectel Technical Support. This document takes the installation of *Quectel_EG91&EG95_Windows_USB_Driver_V1.0.zip* as an example, and the details are shown as below.

1. Check Installation Setting

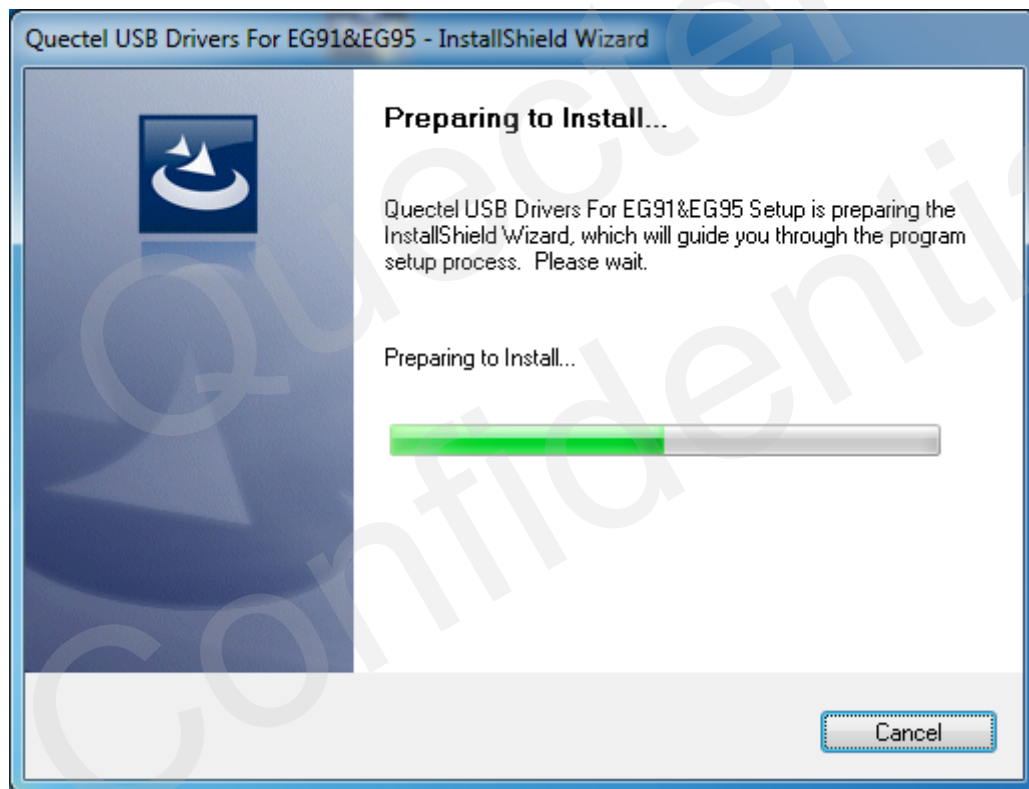


Figure 2: Confirm Installation

2. Choose Destination Location

If the default location is selected, please click **“Next”** directly to skip this step.

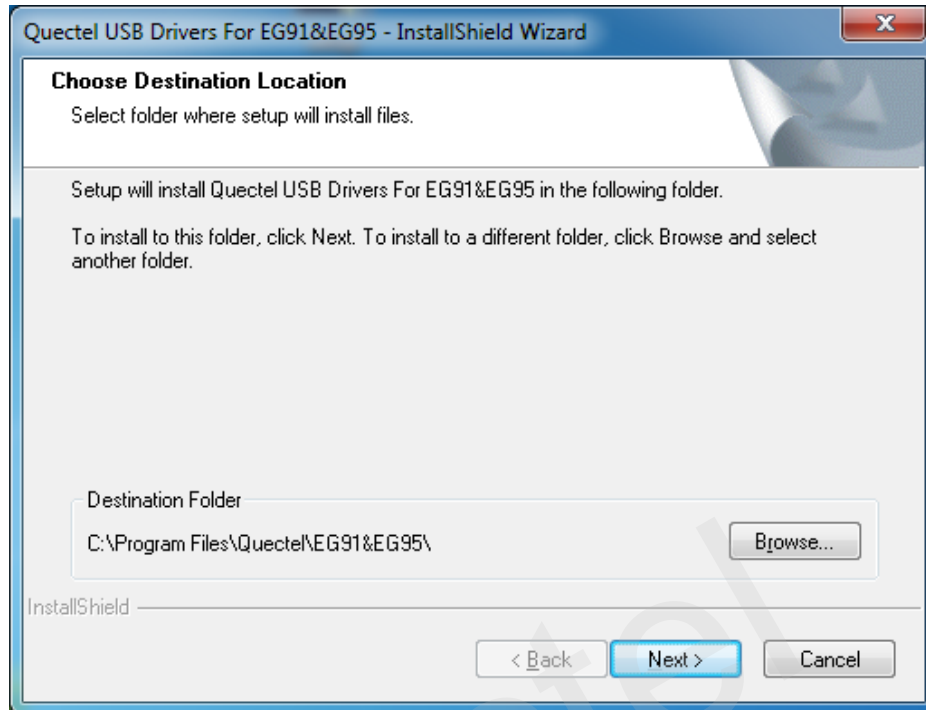


Figure 3: Choose Destination Location

3. Start Copying Files

Click **"Next"** to start copying files if there is no need to change the settings, as shown below.

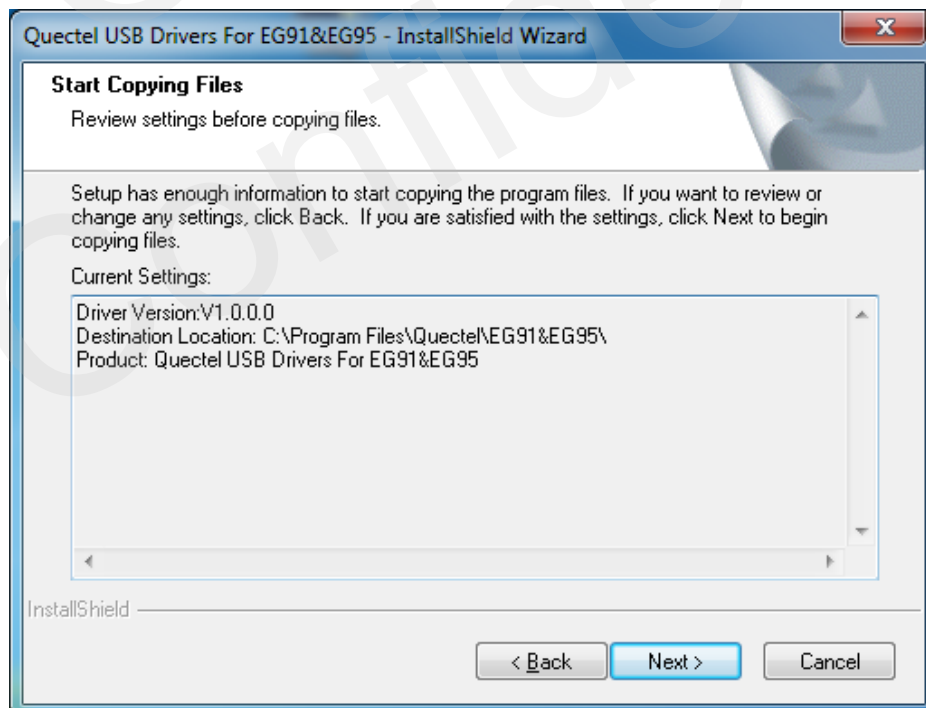


Figure 4: Start Copying Files

4. Wait While Installing Driver

It may take some time to install the driver, please wait patiently for the process to complete.

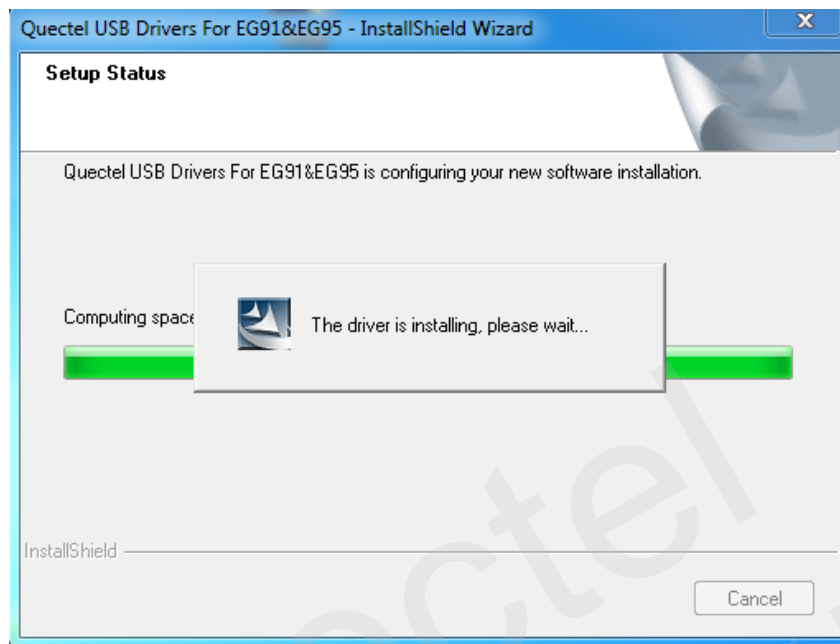


Figure 5: Wait While Installing Driver

5. Finish Installation of Driver

The driver has been installed completely, shown as below.

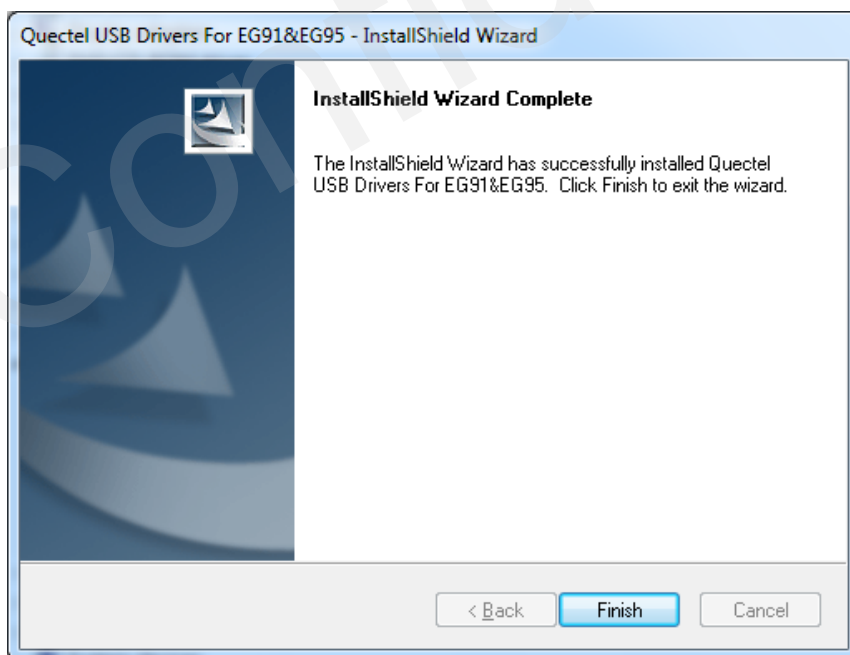


Figure 6: Finish Installation of Driver

Click **"Finish"** to complete the installation. You can check the installation result through Computer Management.

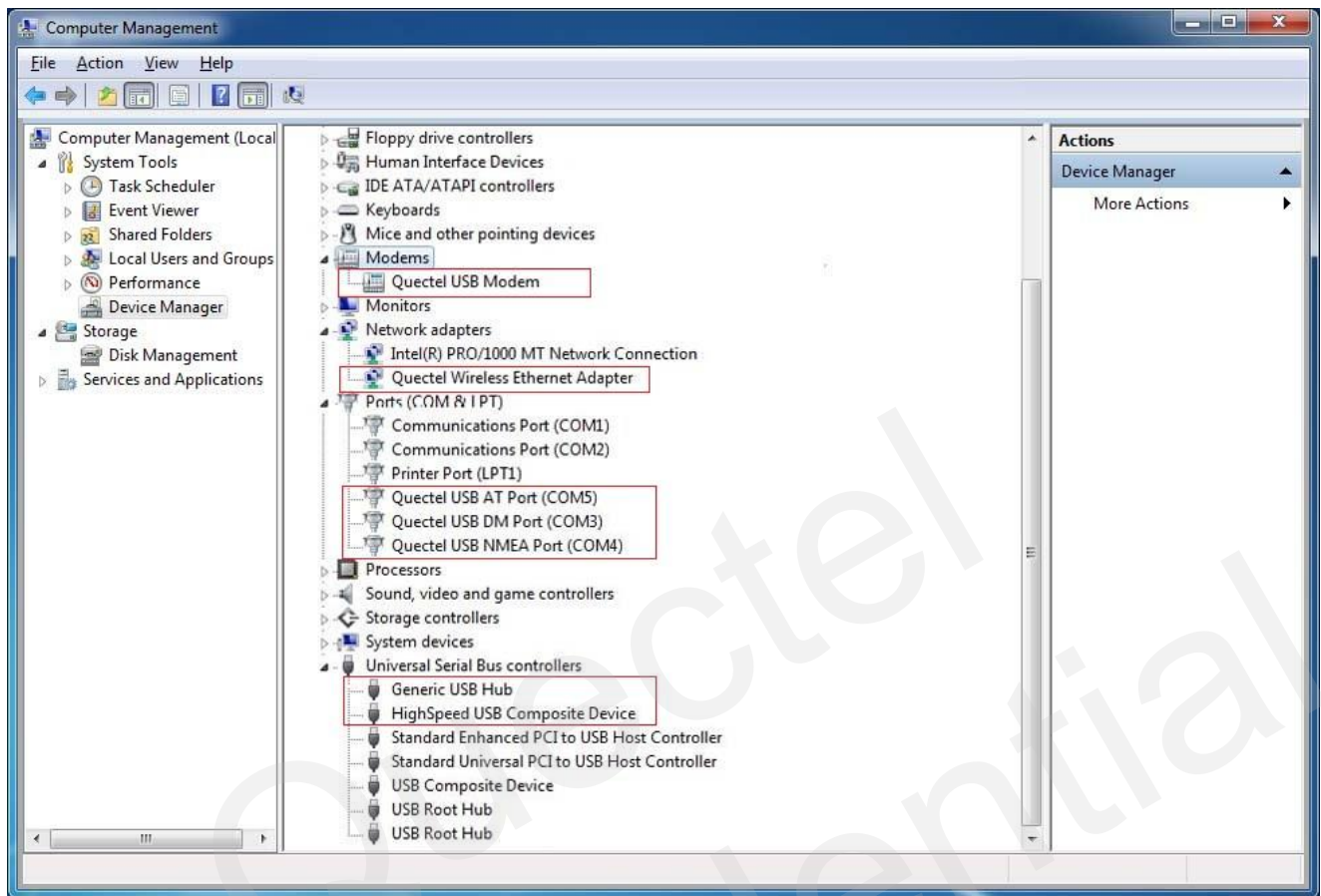


Figure 7: Check Installation Result for Driver

2.2. Test

After the driver has been installed successfully, you can test whether the driver can work normally or not by QNavigator tool. Please refer to the following figure:

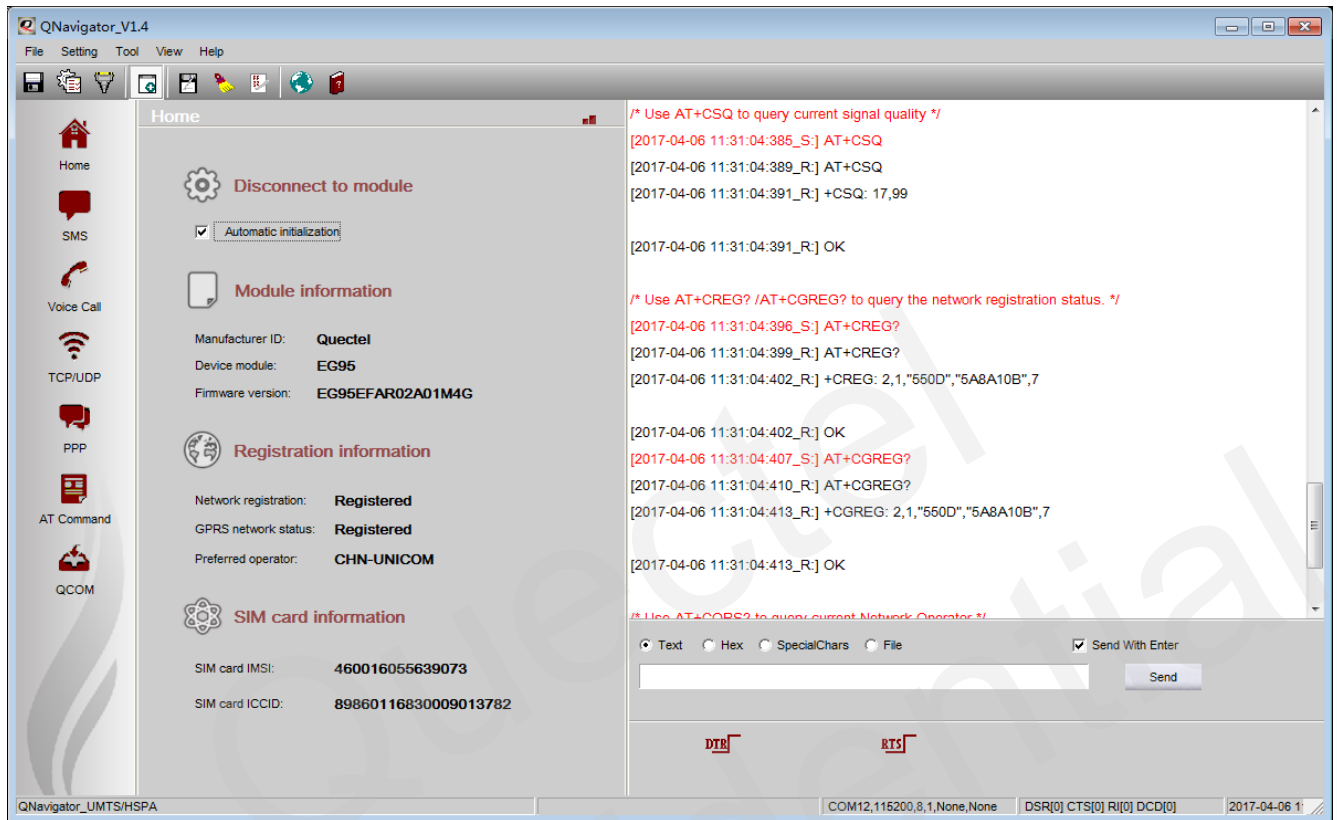


Figure 8: Port Testing by QNavigator

3 Uninstall Driver

This chapter mainly illustrates how to uninstall EG91&EG95 USB driver. The uninstallation can be realized by re-operating installation package or adding/deleting program on Control Panel. In this document, the latter method is introduced as an example to uninstall the “Quectel USB Drivers for EG91&EG95”.

3.1. Uninstallation

1. Choose Driver

Enter Control Panel and choose the installed driver, then click **“Uninstall”**, as shown below.

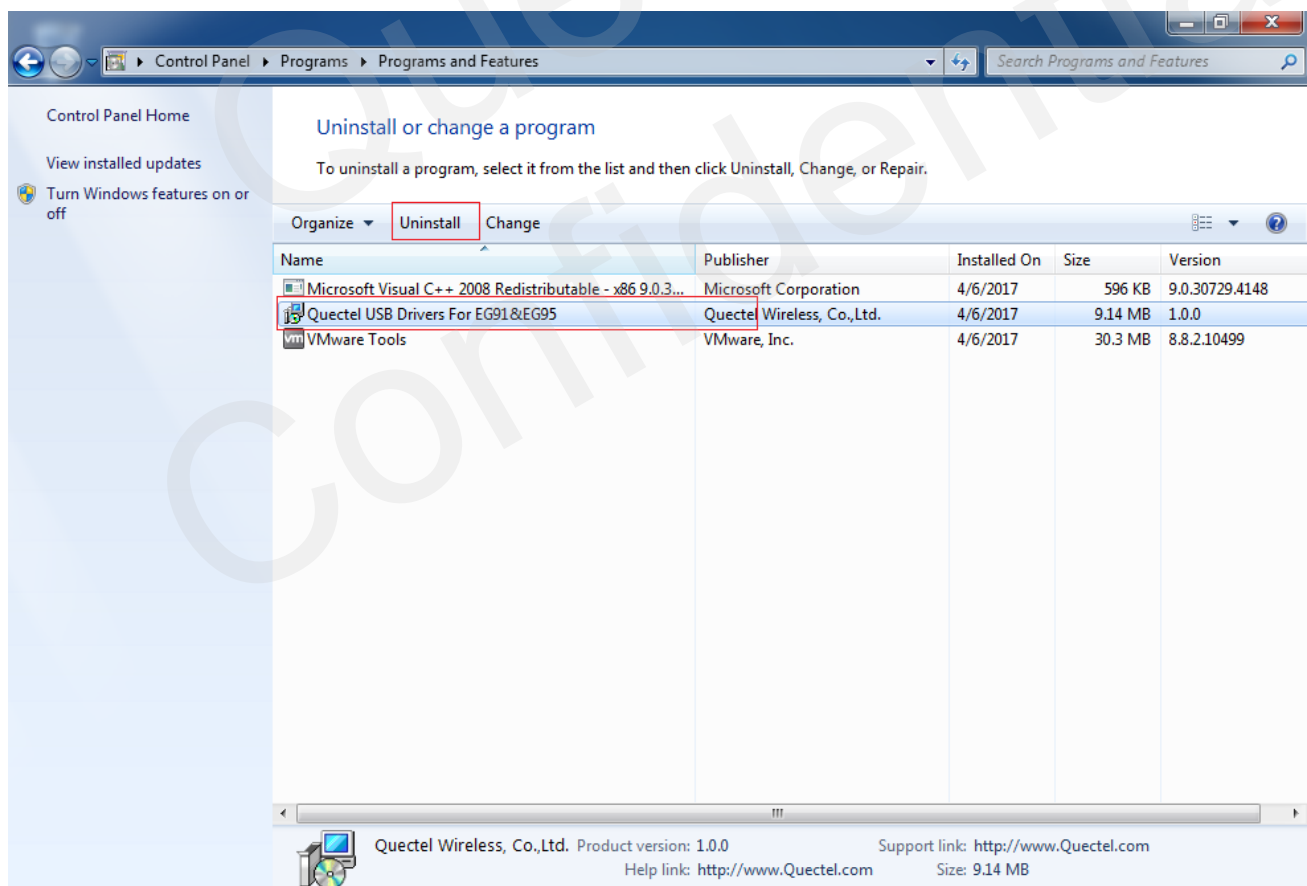


Figure 9: Choose Driver and Uninstall

2. Check Uninstallation Setting

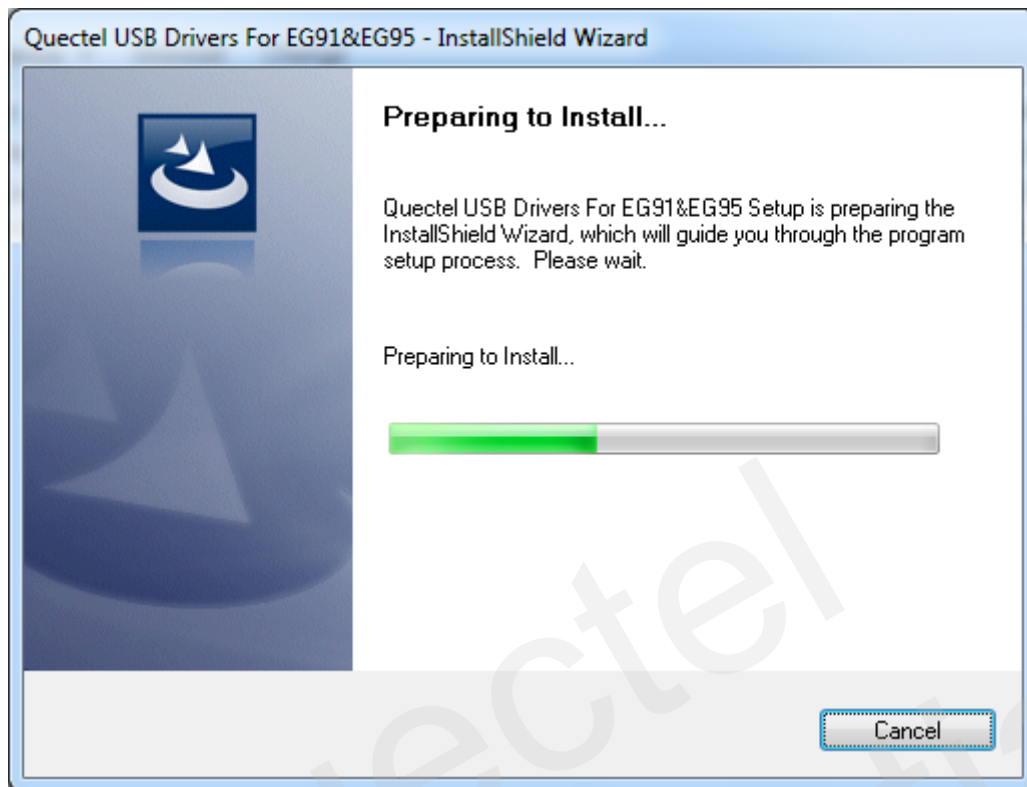


Figure 10: Check Uninstallation Setting

3. Confirm Uninstallation

Click **"Yes"** to confirm the uninstallation.

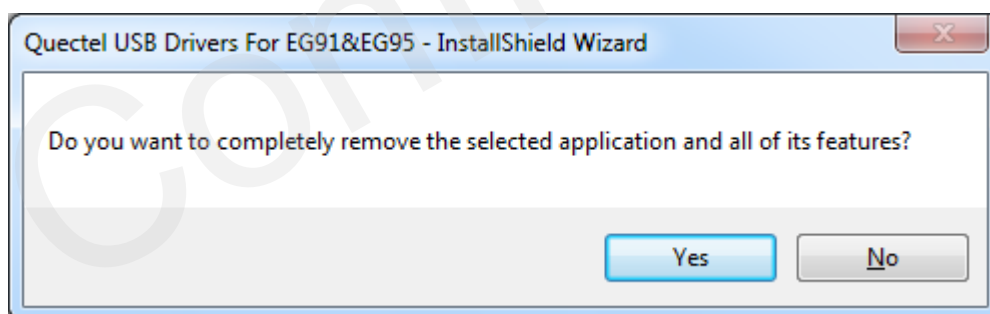


Figure 11: Confirm Uninstallation

4. Wait While Uninstalling Driver

It may take some time to uninstall, please wait patiently for the process to complete.



Figure 12: Wait While Uninstalling Driver

The driver is uninstalling now, as shown below.

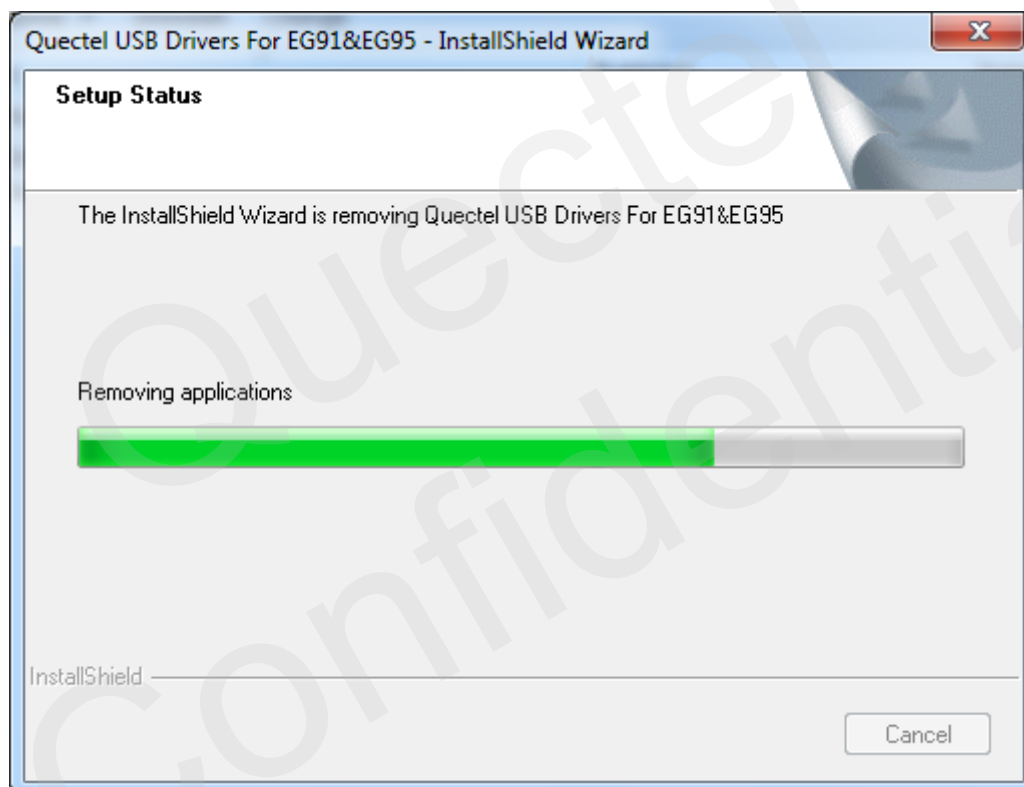


Figure 13: Removing Files

5. Finish Uninstallation

The driver has been uninstalled completely, as shown below.

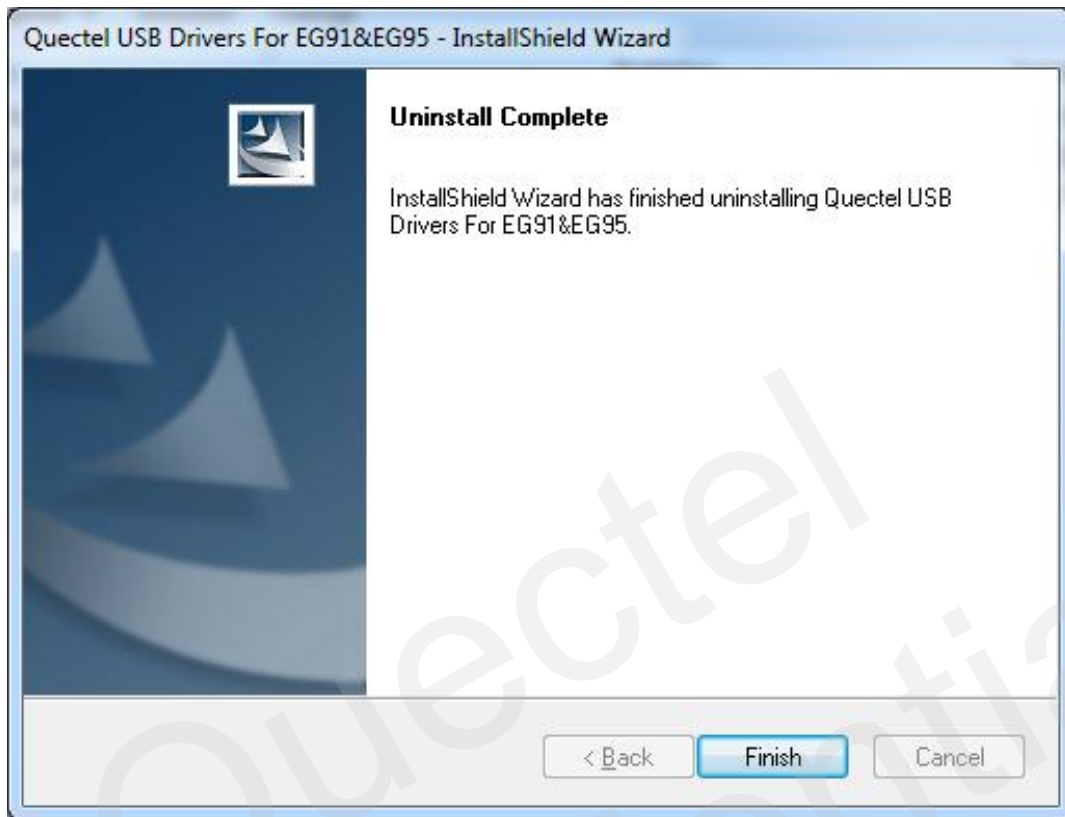


Figure 14: Finish Uninstallation of Driver

6. Check Uninstallation Result

After the driver has been uninstalled, the device will switch to uninstalled status. You can check whether the driver has been uninstalled successfully or not through Computer Management. Please refer to the figure below:

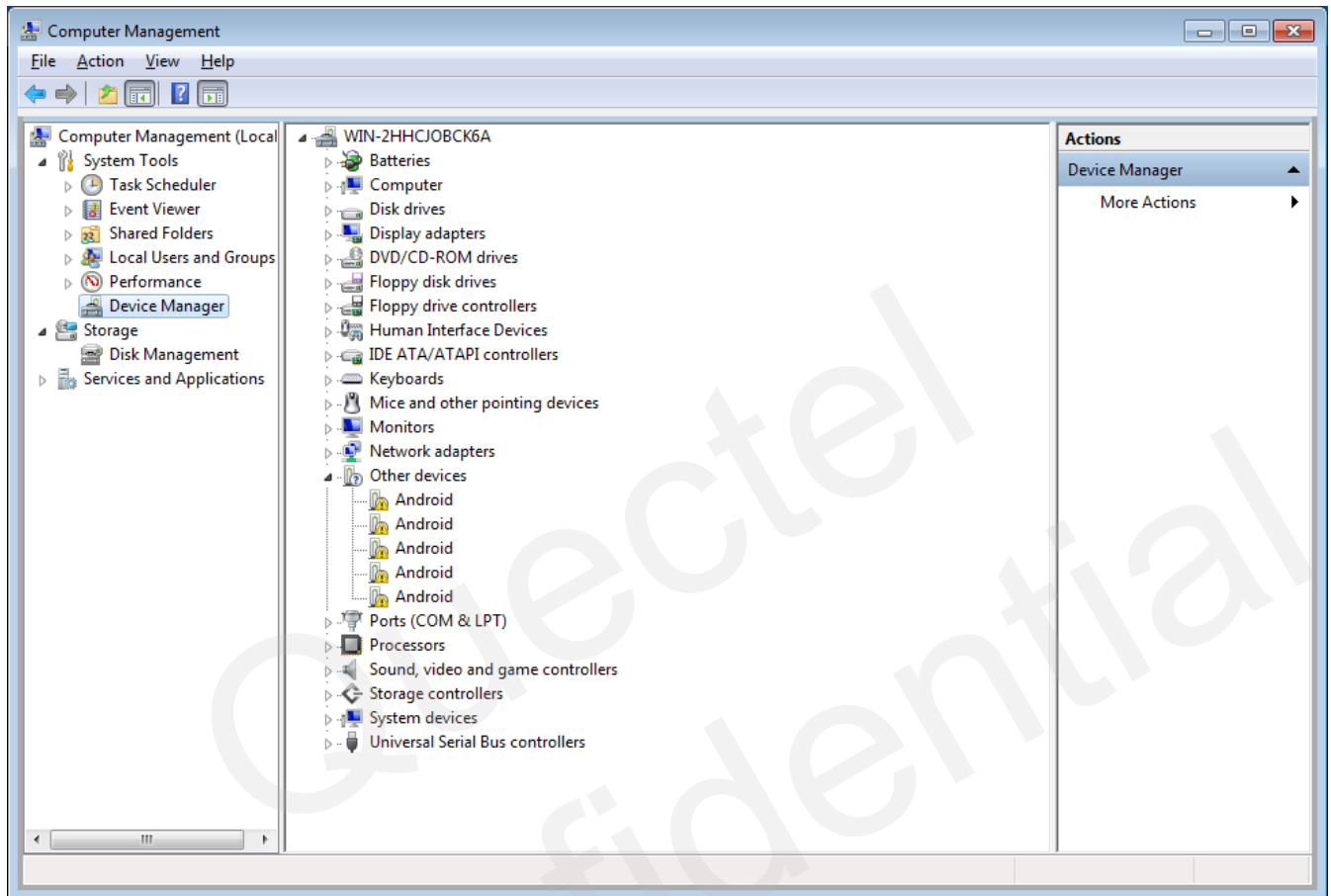


Figure 15: Check Uninstallation Result for Driver